

A PRODUCT OF BHAYA GROUP



# Bhaya Premium Fact Sheet

BHAYA PREMIUM V-VI-VII- VIII \_\_\_\_\_

Launched Year  
**2015**

Operating Area  
**THE GULF OF TONKIN, VIETNAM  
HALONG BAY**

Cruise Duration  
**2 DAYS / 1 NIGHT  
3 DAYS / 2 NIGHTS**





## FACTS & FIGURES

Cabin types	Premium V	Premium VI	Premium VII	Premium VIII
Length	26,50 m	27,30 m	31,20 m	30,64 m
Width	6,3 m	6,6 m	7,8 m	7,85 m
Depth	1,2 m	1,2 m	1,56 m	1,4 m
Crew member	10	10	10	10
Engines	Yanmaz 105 CV	Yanmaz 120CV	Yanmaz 130 CV	Yanmar 120 CV
Total cabins	5	6	7	4
Total passenger	35 for day cruise, 12 for overnight cruise	25 for day cruise, 14 for overnight cruise	35 for day cruise, 16 for overnight cruise	25 for day cruise, 9 for overnight cruise
Renovate	2014	2014	2014	2014

## TRANSPORTATION

Shuttle bus service	Pick up guests at city centre hotels
Private bar service	On request
Helicopter	On request
Seaplane service	On request

## CHECK-IN / CHECK OUT

Check-in time	12:30 pm
Check-out time	10:30 am

## PORT LOCATION

Address	Tuan Chau International Passenger Port, Quang Ninh Province, Vietnam
Distance to nearest bank or ATM	500 m
Distance to nearest hospital	4 km
Distance to Hanoi airport (Noi Bai)	160 km or 3,5 driving hours
Distance to Hanoi City	165 km or 3,5 driving hours
Distance to Haiphong airport (Cat Bi)	75 km or 1,5 driving hours

## CREDIT CARDS ACCEPTED



## LANGUAGES SPOKEN

English, Vietnamese  
(French, German on request)





## ACCOMMODATION

		Premium V	Premium VI	Premium VII	Premium VIII
Premium balcony cabin		5	6	7	4
Cabin with bathtub		1	0	2	4
Pair of connecting cabins		1	1	1	0
Maximum number of passenger		12	14	16	9
Main desk	Number of cabin:	4	4	4	3
	Bed type	Convertible double/Twin bed	Convertible double/Twin bed	Convertible double/Twin bed	Convertible double/Twin bed
	Room area	16 m <sup>2</sup>	16 m <sup>2</sup>	18,5 m <sup>2</sup>	20,5 m <sup>2</sup>
Upper Deck	Number of cabin:	1	2	3	1
	Bed type	Fixed doubles	Fixed doubles	Fixed doubles	Fixed doubles
	Room area	22,3 m <sup>2</sup>	16 m <sup>2</sup>	20,6 m <sup>2</sup>	20,5 m <sup>2</sup>
Private balcony		Yes	Yes	Yes	Yes
Maximum number of persons allowed per cabin:		3	3	3	3

## CABIN AMENITIES (ALL TYPES OF CABINS)

- Mini-bar
- Luxurious bathroom & bath linen
- Air-conditioner per cabin
- Slippers
- 1 complimentary mineral water bottle/pax/day
- Fully-furnished bathroom
- Hot & cold water
- Shower cabin
- Italian style shower
- Private toilet
- Life jackets
- Fire extinguishers
- Emergency lighting & generator
- Smoke detector & sprinkler system



### SERVICES & FACILITIES

- Reception 24/24
- Babysitter (on request)
- Dining room
- Kayaking, swimming & fishing equipment
- Car rental service with driver (on request)
- Theme parties (on request)
- Tender boat service
- Doctor (on call)
- Bar
- First aid kits
- 220V power electricity
- Safety box (at reception)
- 24-hour security
- Emergency equipment & fire alarm system
- Radar system
- Global positioning system

### DINING ROOM & BAR

Lunch	13:00 - 14:30
Dinner	19:00 - 21:00
Brunch	9:00 - 10:30
Light Breakfast	7:00 - 7:45

Restaurant	Bhaya V: 12
seating capacity	Bhaya VI: 14
	Bhaya VII: 16
	Bhaya VIII: 10

Bhaya bar      Tea, coffee, fresh juices, mocktails, cocktails, wines and spirits sourced from around the world

### ACTIVITIES

- Excursion to a cave, a floating fishing village for 1 night cruise
- Excursions to a cave, a floating fishing village, a karst tunnel for the 2 night cruise
- Swimming for 2 night cruise
- Kayaking
- MasterChef competition show
- Tai Chi class
- Wooden games

### EVENT (On request)

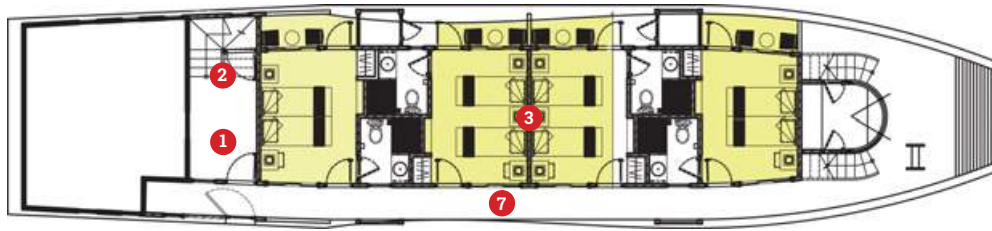
- Corporate parties
- Wedding ceremonies
- Company retreats
- Fashion shows
- Beach parties
- Traditional & modern live music
- Traditional & modern dance
- Meetings & conferences
- Birthdays, anniversaries & honeymoons

\* The itinerary & activities depend on the weather & conditions of operation.

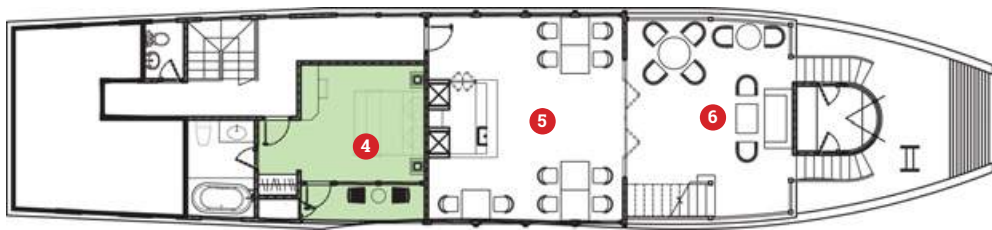


DECK PLAN

BHAYA PREMIUM V



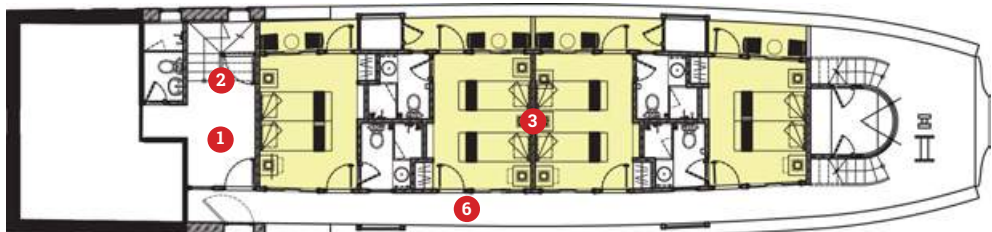
Main Deck



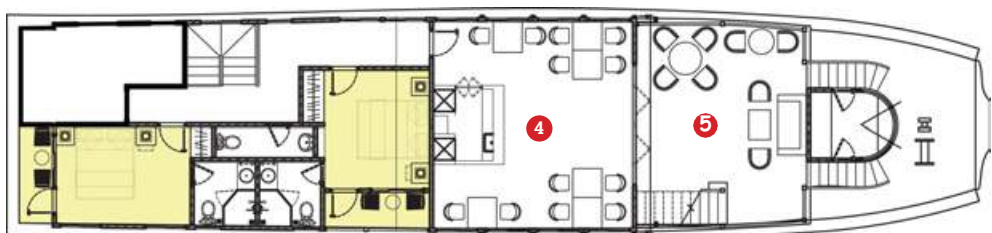
Upper Deck

- 1. Lobby area
- 2. Reception
- 3 & 4. Premium balcony cabin
- 5. Bar & Restaurant
- 6. Outdoor restaurant
- 7. Corridor

BHAYA PREMIUM VI



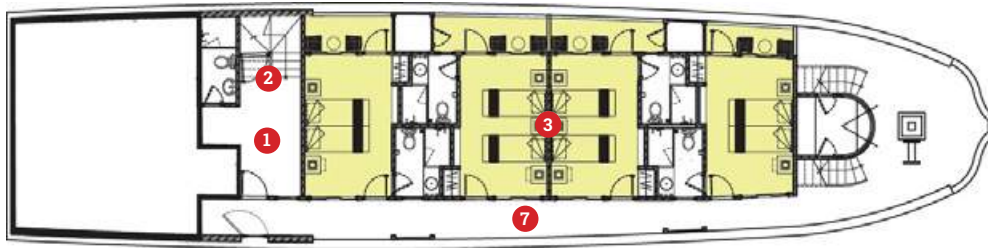
Main Deck



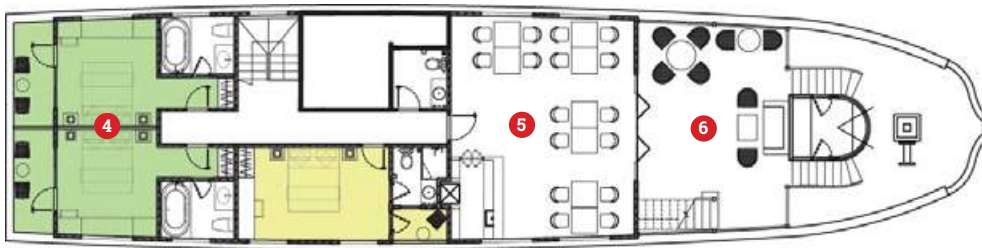
Upper Deck

- 1. Lobby area
- 2. Reception
- 3. Premium balcony cabin
- 4. Bar & Restaurant
- 5. Outdoor restaurant
- 6. Corridor

## BHAYA PREMIUM VII



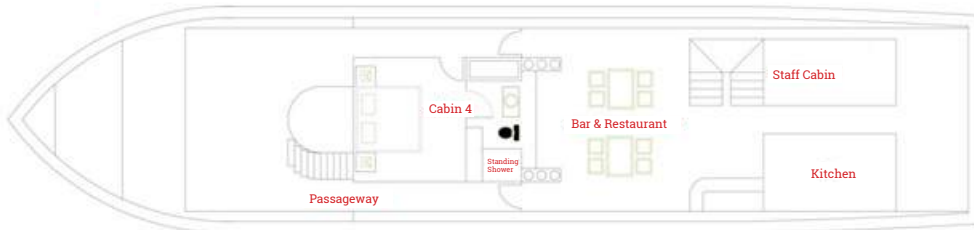
Main Deck



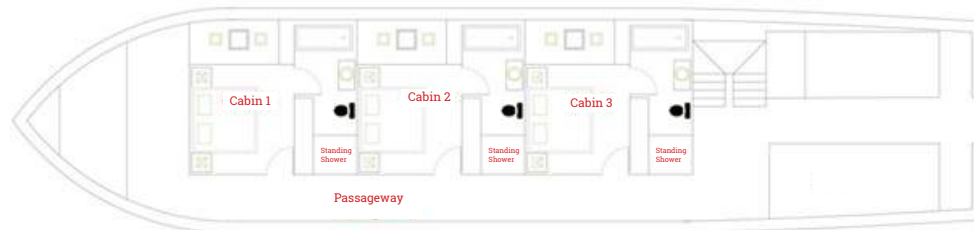
Upper Deck

- 1. Lobby area  
2. Reception
- 3 & 4. Premium balcony cabin  
5. Bar & Restaurant
- 6. Outdoor restaurant  
7. Corridor

## BHAYA PREMIUM VIII



Main Deck



Upper Deck



**Bhaya Classic Premium - A Member of Bhaya Collection**

📍 47 Phan Chu Trinh Str., Hoan Kiem Dist., Hanoi, Vietnam

☎ +84 24 3 9 44 67 77 ✉ sales@bhayacruises.com 🌐 www.bhayacruises.com

📺 www.youtube.com/user/BhayaCruises 📷 www.instagram.com/bhayacruiseshalong 📘 www.facebook.com/BhayaClassicHalong